



biolight 7000sc

PROFESSIONAL BIO LIGHT USER MANUAL

Professional Light Therapy system

HIGH OUTPUT, COLOR SELECTION
PULSE SELECTION, INTENSITY SELECTION

Revitalize Your Radiance with Bio Light: Selections of color setting

1. Red
2. Blue
3. Yellow
4. Green
5. Red & Blue
6. Red & Yellow
7. Red, Blue, Yellow & Green



RICHWAY & FUJI BIO INC.

1314 SOUTH KING STREET SUITE 520, HONOLULU, HI 96814 USA

TEL: +1-808-589-2800 TOLL-FREE: +1-855-338-6410 FAX: +1-808-597-1651

www.richwayandfujibio.com



Elevate Your Skincare Experience with Advanced LED Technology

Discover the Bio Light 7000 and unlock the potential of advanced LED technology for your skincare journey.

Unlike ordinary LED light therapy devices that offer weak output and limited functionality, Bio Light 7000 has been developed as a high-quality skincare device. It delivers comparable performance to professional-grade equipment used in specialized clinics.

Here's what sets Bio Light 7000 apart

1] High Output for Enhanced Skincare:

Experience the power of strong output, significantly boosting the effectiveness of your skincare routine.

2] Versatile Color Selection:

Choose from 7 different colors:

- 1. Red ●
- 2. Blue ●
- 3. Yellow ●
- 4. Green ●
- 5. Red & Blue ● ●
- 6. Red & Yellow ● ●
- 7. Red, Blue, Yellow & Green ● ● ● ●

Each color offers unique benefits.

3] Adjustable Intensity:

Customize the intensity level on a scale of 1 to 10, catering to your specific needs and preferences.

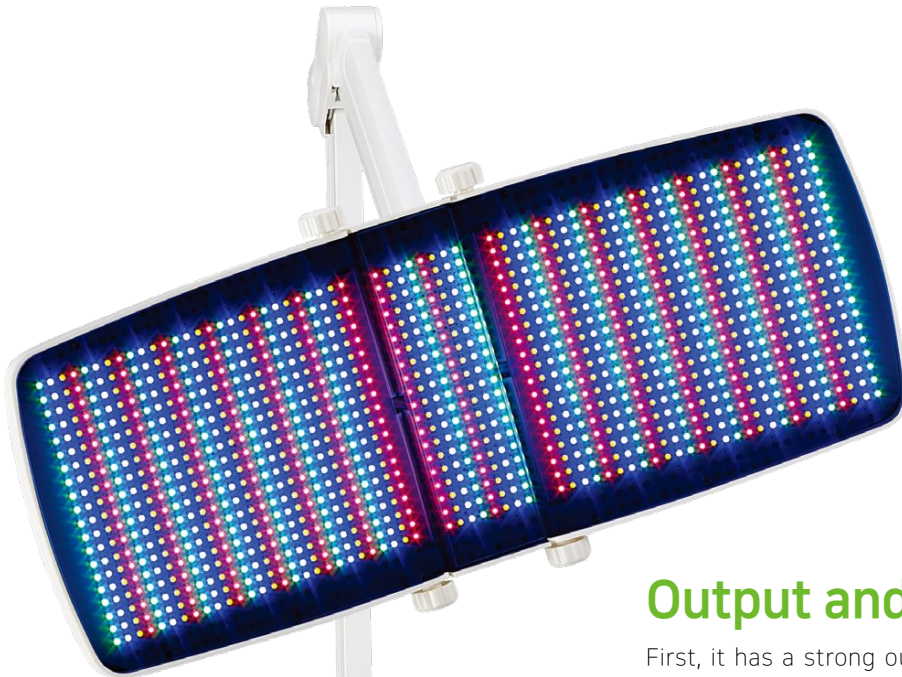
4] Pulse Selection:

Benefit from 11 pulse levels ranging from 10 to 110. Pulse functionality is available from 10 to 90, while 100 to 110 provides a steady, non-pulsating light.

5] Flexible Time Settings:

Set the treatment duration from 5 to 30 minutes across 6 different time intervals. The device automatically sets to 20 minutes upon startup.

BIO LIGHT 7000sc FEATURES



Safety Precautions

Read and follow all of the instructions in this manual before using. Proper use of the Bio Light 7000 will prevent harm to the user and damage to private property. Only use the Bio Light 7000 for the purposes specified in this manual.

Output and Color

First, it has a strong output that can enhance skin. The output is set differently for each color:



RED

40mW

Wavelength: 623nm



YELLOW

35mW

Wavelength: 590nm



GREEN

40mW

Wavelength: 512nm



BLUE

60mW

Wavelength: 470nm

You can choose from 7 different Options:

1. Red ●
2. Blue ●
3. Yellow ●
4. Green ●
5. Red + Blue ●●
6. Red + Yellow ●●
7. All: Red, Blue, Yellow & Green ●●●●

Intensity Selections

You can adjust the intensity from level 1 to 10.

► **PULSE OPTIONS:** Pulse can be adjusted in 11 levels from 10 to 110. For levels 10 to 90, it's pulse functionality. For levels 100 to 110, it's a steady light, and pulse functionality is 0.

- **10~30:** Muscle depth
- **40~60:** Subcutaneous layer
- **70~90:** Dermis layer
- **100~110:** Epidermal layer

Time Selections

Time can be adjusted in 6 levels from 5 to 30 minutes.

When the device is turned on, it's automatically set to 20 minutes.

- **MUSCLE RELAXATION:** 30 minutes
- **SUBCUTANEOUS LAYER:** 25 minutes
- **DERMIS LAYER:** 20 minutes

The theoretical basis of LED light therapy can be described as follows:

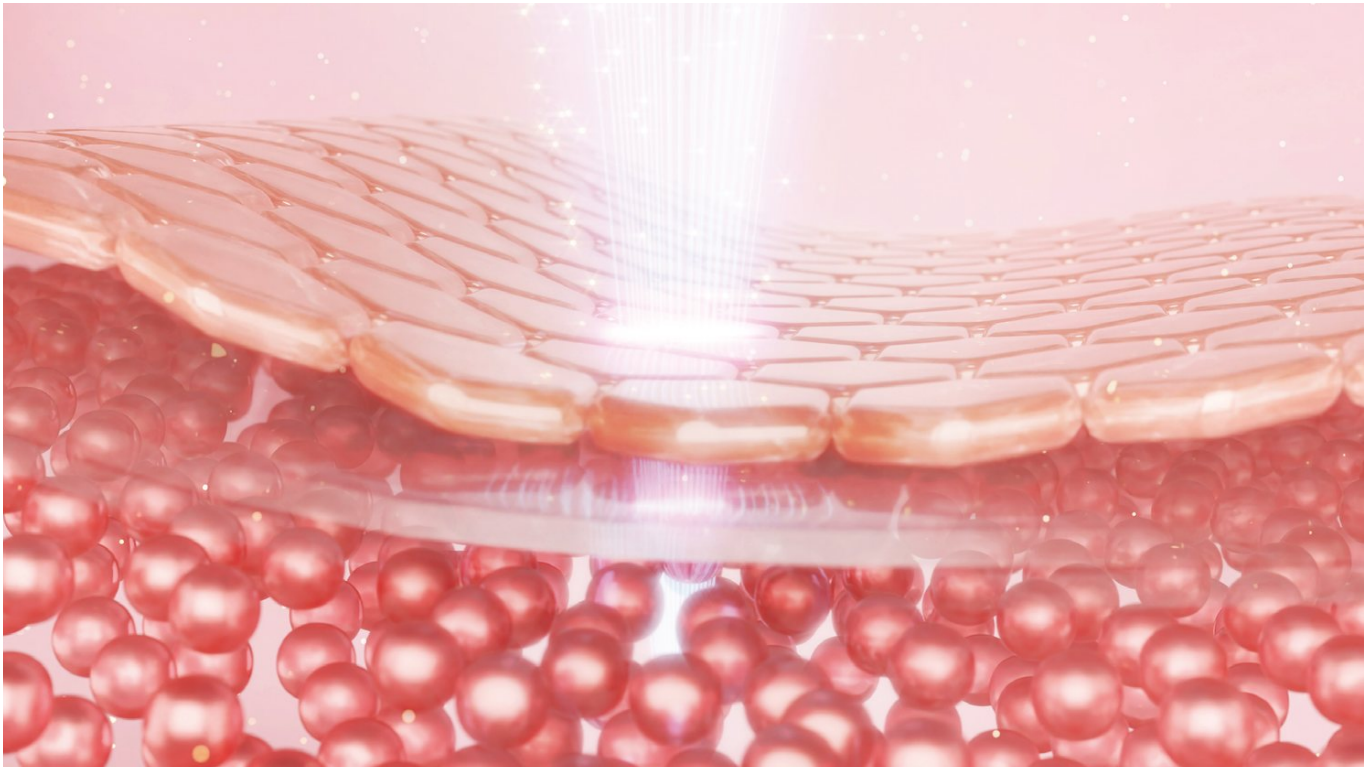
LED light therapy is based on the principle of photoactivation, where the application of LED light induces specific cellular responses without causing tissue damage. The therapy utilizes low-output LEDs that emit specific wavelengths of light, typically in the visible or near-infrared spectrum.



The interaction between the emitted light and the cells occurs through a process known as photobiomodulation. When the LED light is absorbed by chromophores within the cells, it triggers a series of biological reactions. One important chromophore is cytochrome c oxidase, which is part of the mitochondrial respiratory chain.

The absorbed light energy stimulates cytochrome c oxidase, leading to increased cellular energy production in the form of adenosine triphosphate (ATP). This heightened ATP production provides cells with the necessary energy to perform various functions, such as cellular repair, growth, and regeneration.

Furthermore, LED light therapy can have specific effects on different cell types.

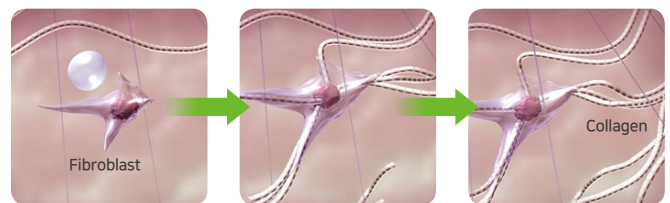
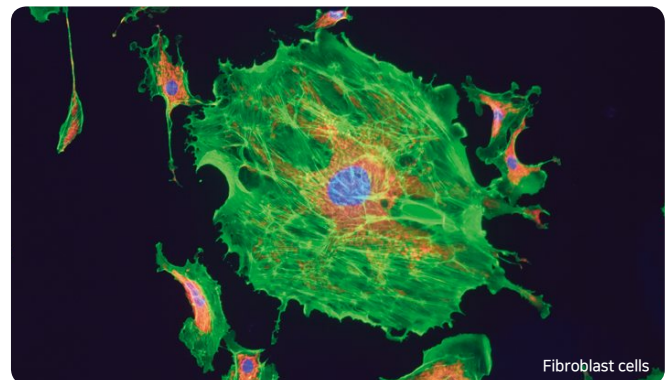


For instance, fibroblasts, which are responsible for collagen and elastin production in the skin, can be activated by specific wavelengths of LED light.

This activation promotes collagen synthesis, enhances tissue repair, and helps improve skin elasticity and texture. Similarly, LED light therapy can also influence other cellular processes, including reducing inflammation, promoting circulation, and modulating cellular signaling pathways.

The effectiveness of LED light therapy has been supported by numerous clinical studies and research findings. However, it is important to note that the specific mechanisms of action may vary depending on the targeted tissues and the parameters of the LED light used, such as wavelength, intensity, and treatment duration.

Overall, LED light therapy provides a non-invasive and well-tolerated approach for promoting cellular responses and stimulating various biological processes in a controlled and beneficial manner.



Hyaluronic acid stimulate fibroblast and collagen production in the skin



Bio Light with SF10

Basic Bio Light Usage Instructions

- 1 Drink a glass of water (alkaline water is preferable).
- 2 Have the client lie down on the Acoustic Mat with the Bio Mat on top.
(Acoustic setting: RELAX 1, Bio Mat setting: 157°F)
- 3 Cleanse the face with a warm towel.
(Place a wet towel in the microwave for 40 seconds for heating).
- 4 Apply SF10 Serum to the face in sequence, gently patting and allowing it to absorb.
- 5 Set up the Bio Light with **INTENSITY 10, COLOR 7(All: ●●●●●●●●)**, **PULSE 90, TIME 20**, and expose the client for 20 minutes.
- 6 Allow the client to rest for 10 minutes after the session.

When using the SF3 Facial Mask alongside, complete the above steps and then:

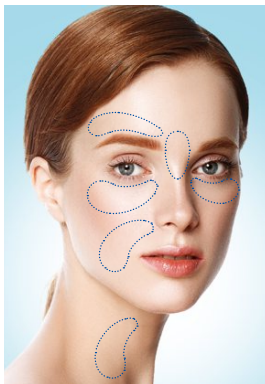
- 7 Attach the SF3 Facial Mask to the face and connect the battery. Use for 20 minutes.

► **Note: The Bio Light is not used during this step.**

IT IS RECOMMENDED TO USE THE SF10 SERUM BEFORE USING THE BIO LIGHT

SF 10 Serum comes in a 25ml / 0.85 fl.oz packaging, and it is typically used for 2 to 4 weeks. The smaller packaging is designed to prevent extended exposure to oxygen after opening, aiming to maintain product effectiveness.

Containing 10% non-decomposable collagen, the SF10 Serum utilizes micro-liposome technology to deliver collagen to the dermis. Collagen integration into the dermal layer primarily occurs during the evening hours. Therefore, applying the SF10 Serum before bedtime yields optimal results. The Bio Light assists in ensuring the collagen effectively adheres to and survives in the dermal layer.



The facial application areas are categorized into a total of 12 sections:

- 1 Forehead
- 2 Crow's feet beside the eyes (left, right)
- 3 Under-eye areas (left, right)
- 4 Lines beside the nose (left, right)
- 5 Lines beside the lips (left, right)
- 6 Area beneath the lower lip and chin
- 7 Front of the neck (left, right)

Apply one drop of serum to each of these 12 sections. Once serum has been applied to all 12 areas, gently pat and massage with your hands to aid absorption. After completing this process, you can proceed to use the Bio Light.

Recommended Skincare Routine:

- ▶ It is advisable to use the Bio Light once every two weeks.
- ▶ Apply SF10 Serum every evening.
- ▶ Use the SF3 Bio Current Mask every other day.





SETTINGS FOR Rapid dermal Management

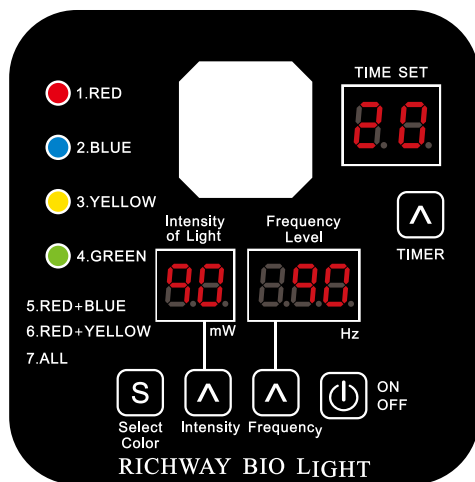
- ▶ **COLOR** Red, Blue, Yellow, and Green

 (Option 7 / 4 Colors)

- ▶ **INTENSITY** 90 mW

- ▶ **PULSE** 90 Hz

- ▶ **TIME** 20 Minutes





SETTINGS FOR Managing Outer Skin Layer

- ▶ **COLOR** Red and Blue

 (Option 5 / 2 Colors)

- ▶ **INTENSITY** 50 mW

- ▶ **PULSE** 100 Hz

- ▶ **TIME** 20 Minutes

1. RED

2. BLUE

3. YELLOW

4. GREEN

5. RED+BLUE

6. RED+YELLOW

7. ALL

Intensity of Light

88

mW

Frequency Level

100

Hz

TIME SET

20

TIMER

S

^

^

⏻

Select Color Intensity Frequency ON OFF

RICHWAY BIO LIGHT





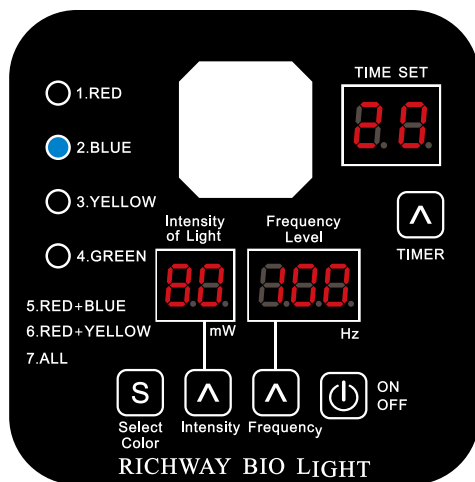
SETTINGS FOR Whitening

- ▶ **COLOR** Blue
 ●
 (Option 2 / 1 Color)

- ▶ **INTENSITY** 80 mW

- ▶ **PULSE** 100 Hz

- ▶ **TIME** 20 Minutes





SETTINGS FOR Improving Fine Lines

- ▶ **COLOR** Red and Yellow

 (Option 6 / 2 Colors)

- ▶ **INTENSITY** 50 mW

- ▶ **PULSE** 110 Hz

- ▶ **TIME** 20 Minutes

- 1. RED
- 2. BLUE
- 3. YELLOW
- 4. GREEN
- 5. RED+BLUE
- 6. RED+YELLOW
- 7. ALL

TIME SET

20

Intensity
of Light

50

mW

Frequency
Level

110

Hz

▲

TIMER

S

Select
Color

▲

Intensity

▲

Frequency

⏻

ON
OFF

RICHWAY BIO LIGHT



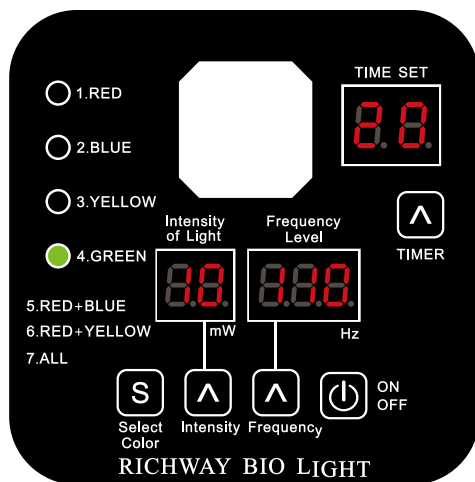
SETTINGS FOR Resolving Skin Troubles

► **COLOR** Green
●
(Option 4 / 1 Color)

► **INTENSITY** 10 mW

► **PULSE** 110 Hz

► **TIME** 20 Minutes





SETTINGS FOR Treating Muscle Pain and Neuralgia

- ▶ COLOR Red
●
(Option 1 / 1 Color)

- ▶ INTENSITY 10 mW

- ▶ PULSE 40 Hz

- ▶ TIME 30 Minutes

1. RED
 2. BLUE
 3. YELLOW
 4. GREEN
 5. RED+BLUE
 6. RED+YELLOW
 7. ALL

Intensity of Light: 10 mW
 Frequency Level: 40 Hz

TIME SET: 30

Select Color
 Intensity
 Frequency
 ON/OFF

RICHWAY BIO LIGHT



옐로에 대한 원고가 없었습니다.
기능 및 설정값 설명 부탁드립니다.

SETTINGS FOR Treating Muscle Pain and Neuralgia

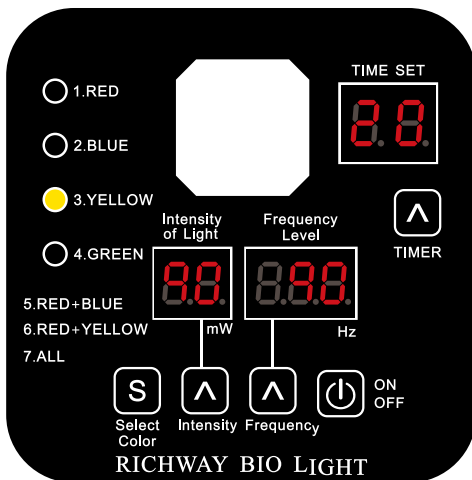
- ▶ COLOR Yellow

(Option 1 / 1 Color)

- ▶ INTENSITY 10 mW

- ▶ PULSE 40 Hz

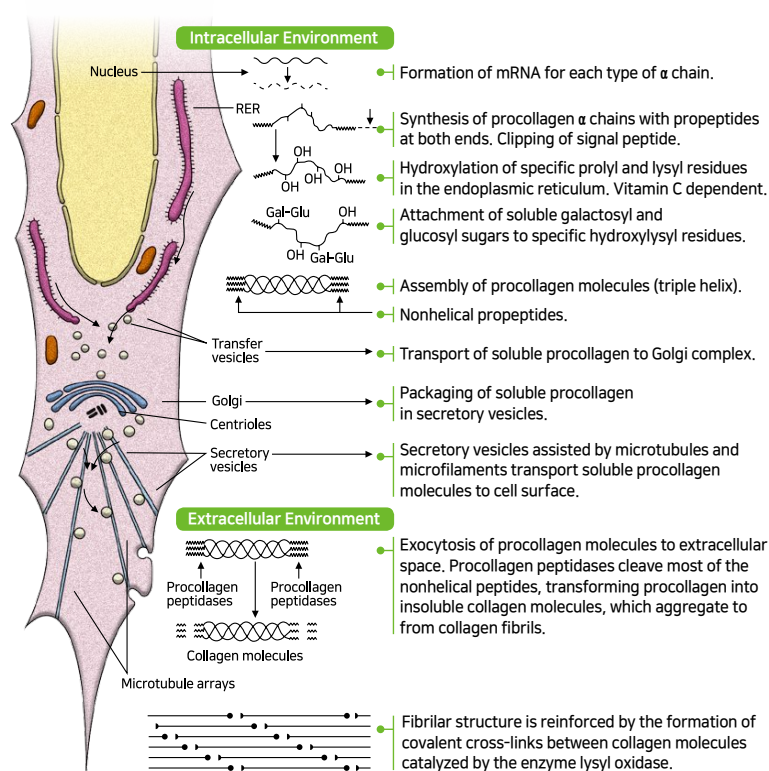
- ▶ TIME 30 Minutes



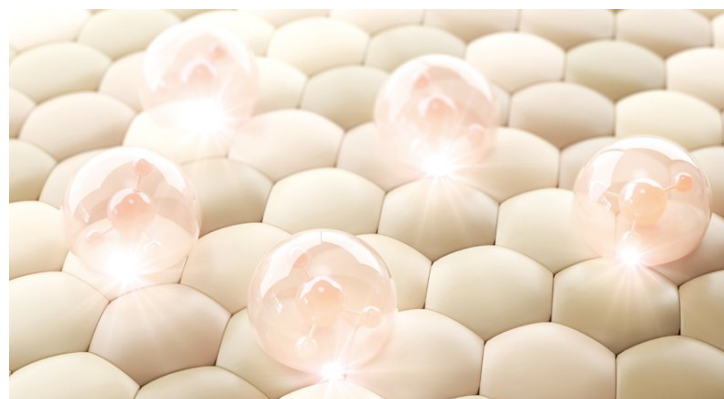
HOW DOES THE INTRODUCED COLLAGEN SURVIVE IN THE DERMAL LAYER?

Lateral association of triple-helical domains. At physiological temperature such as 37°C, water molecules on the hydrophobic domains will be dehydrated.

Collagen molecules accomp lateral association of the triple-helical domains through the exposed hydrophobic regions. It makes Spontaneous Self-Assembly into Supramolecular Structures at Body Temperature.

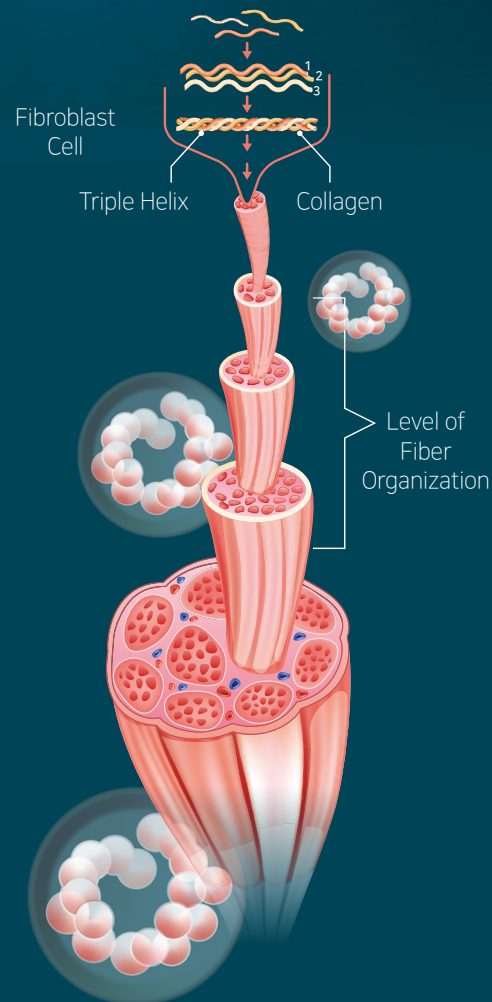


Source: Mescher AL, Junqueira's Basic Histology: Text and Atlas, 12th Edition. <http://www.accessmedicine.com>
Copyright © The McGraw-Hill Companies, Inc. All right reserved.




STARFISH COLLAGEN

Spontaneous Self-Assembly into Supramolecular Structures at Body Temperature. Starfish collagen contains a high concentration of active components essential for skin improvement. As a result, it offers excellent effects in reducing wrinkles enhancing skin elasticity, and providing moisturization.



PREMIUM FACE SERUM

SF10™ *with* Penellagen

BIOTECHNOLOGY

A Quality Life is not only about living longer,
but also living a healthier life.

With Biotechnology,
we can open the doors of challenge
the reversing of aging.

53 Ingredients



MICRO CURRENT

SF3™ Facial Mask

Microcurrent stimulates the face by
sending gentle electrical waves
through the skin and tissues to
the facial muscles.

Microcurrent has been shown to
stimulate ATP production,
stimulate facial muscle vitality
and promote collagen and
elastin production.

The microcurrent pair stimulates
muscle movement and accelerates the
synthesis of collagen on the face.



FOR ORDERING OR QUESTIONS,

CONTACT:

JOCELYNE COLOMBE @ 860-830-1115

OR UNIVERSALBIOMAT@ME.COM